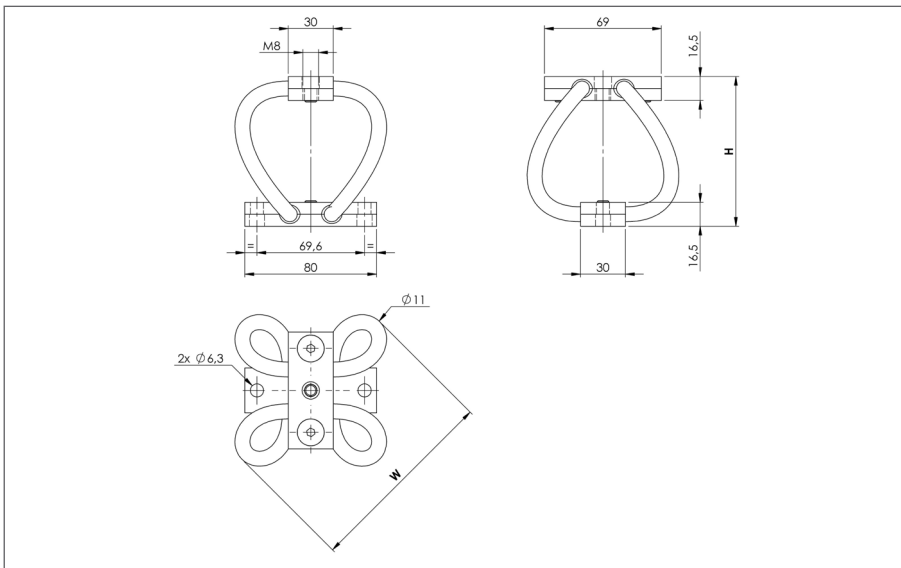


WIRE ROPE ISOLATORS: MACHINED LINE "POLYCAL"

PERFORMANCES
series AP11/SP11



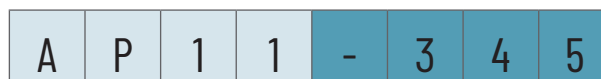
- All metal multidirectional anti-vibration/shock mounts.
- Exceptional reliability and long life.
- High damping.
- No ageing.
- Corrosion resistant.
- Unequalled temperature range : -180°C +300°C.
- Cheap and quick prototypes from stock.

Dimensions are in mm. For reference only.

SERIES Materials and finishes	
AP11 Cable: stainless steel. Bars: aluminium alloy/surtec 650. Screws: Alloy steel/zinc plate (Inserts: alloy steel/zinc plate)	SP11 Cable: stainless steel. Bars: stainless steel. Screws: stainless steel.
Other materials on request	

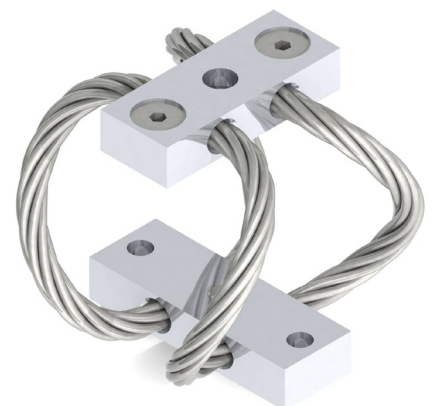
MODEL	AP11		SP11	
	height h (mm)	width w (mm)	mass (kg)	mass (kg)
-200	80	114	0,536	0,780
-230	90	123	0,580	0,825
-260	99	133	0,625	0,870
-300	112	145	0,684	0,930
-345	126	160	0,750	0,990

EXAMPLE
AP11-345



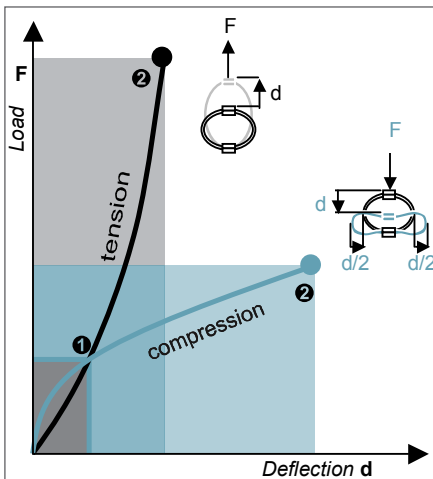
PREFIX:
machined 'Polycal'
mount
from the AP11 series

MODEL: -345
height: 126 mm
width: 160 mm
mass: 0,750 kg



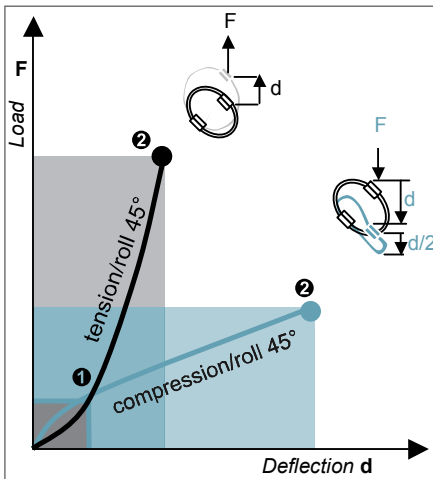
WIRE ROPE ISOLATORS: MACHINED LINE “POLYCAL”

PERFORMANCES
series AP11/SP11



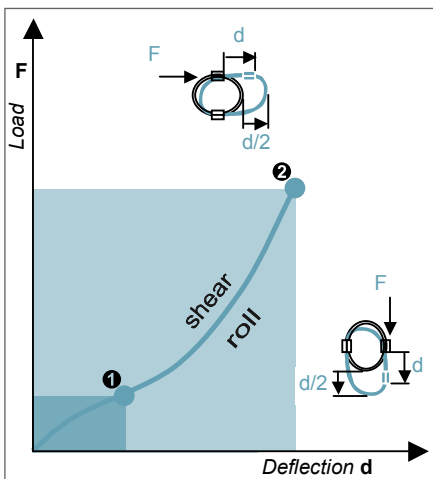
COMPRESSION AND TENSION

AP11/SP11 Series	Model	-200	-230	-260	-300	-345			
1. Max Static	F daN	51,4	44,1	38,1	32,3	27,0			
	d mm	7,8	9,5	11,0	13,1	15,4			
2. Max Shock	F daN	154	132	114	97	81			
	d mm	42	51	59	71	84			
3. Max Vibration	2a mm	4,7	5,7	6,6	7,9	9,3			
	f Hz	6	5	5	4	4			
1. Max Static	F daN	51,5	44,2	38,1	32,3	27,1			
	d mm	6,1	7,5	8,6	10,3	12,2			
2. Max Shock	F daN	345	296	255	217	181			
	d mm	21	26	30	36	42			
3. Max Vibration	2a mm	2,5	3,0	3,5	4,1	4,9			
	f Hz	7	6	6	5	5			



COMPRESSION/ROLL 45° - TENSION/ROLL 45°

AP11/SP11 Series	Model	-200	-230	-260	-300	-345			
1. Max Static	F daN	36,3	31,2	26,9	22,8	19,1			
	d mm	11,0	13,4	15,5	18,6	21,8			
2. Max Shock	F daN	109	94	81	68	57			
	d mm	60	73	84	101	118			
3. Max Vibration	2a mm	6,6	8,0	9,3	11,1	13,1			
	f Hz	5	4	4	3	3			
1. Max Static	F daN	33,0	28,4	24,4	20,7	17,4			
	d mm	7,5	9,1	10,5	12,6	14,8			
2. Max Shock	F daN	237	203	175	149	125			
	d mm	27	33	38	45	53			
3. Max Vibration	2a mm	3,0	3,6	4,2	5,0	5,9			
	f Hz	6	6	5	5	4			



SHEAR OR ROLL

AP11/SP11 Series	Model	-200	-230	-260	-300	-345			
1. Max Static	F daN	24,3	20,9	18,0	15,3	12,8			
	d mm	13,4	16,2	18,8	22,5	26,4			
2. Max Shock	F daN	154	132	114	97	81			
	d mm	44	54	62	75	88			
3. Max Vibration	2a mm	5,3	6,5	7,5	9,0	10,6			
	f Hz	5	4	4	3	3			

1. Max static load (F) with corresponding deflection (d)
2. Max shock load (F) with corresponding deflection (d)
3. Uncoupled resonant frequency (f) under max static loading 1. and max peak to peak sinusoidal vibration input (2a)

* IMPORTANT: Performance characteristics are given here for reference only. They can be increased under specific conditions. **Contact us.**

TYPICAL SHOCK/VIBRATION SPECIFICATIONS:

Ground Forces	GAM EG13A, SEFT 001, MIL-STD-810, VG 95332.
Air	AIR 7306, MIL-E-5400, MIL-C-172, MIL-STD-810.
Marine	GAM EG13C, IT25-21/96-31/15-86, MIL-S-167, MIL-S-901, STANAG 042, BV 043.73, BV 044.
Others	GAM EMB1, GAM EMBT4, DEF STAN 07-55, IEC 571, FINABEL 2C.