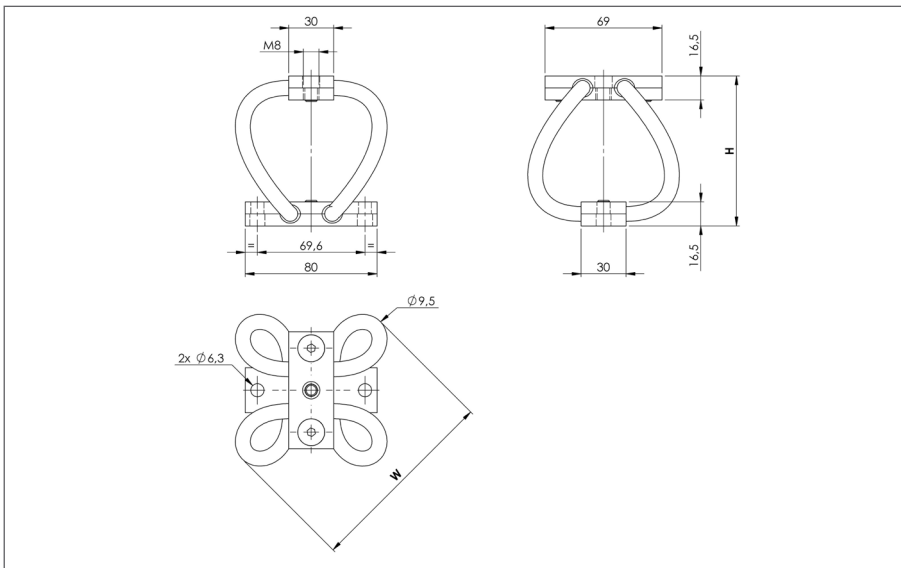


WIRE ROPE ISOLATORS: MACHINED LINE "POLYCAL"

PERFORMANCES
series AP13/SP13



- All metal multidirectional anti-vibration/shock mounts.
- Exceptional reliability and long life.
- High damping.
- No ageing.
- Corrosion resistant.
- Unequalled temperature range : -180°C +300°C.
- Cheap and quick prototypes from stock.

Dimensions are in mm. For reference only.

SERIES Materials and finishes	
AP13 Cable: stainless steel. Bars: aluminium alloy/surtec 650. Screws: Alloy steel/zinc plate (Inserts: alloy steel/zinc plate)	SP13 Cable: stainless steel. Bars: stainless steel. Screws: stainless steel.
Other materials on request	

MODEL	AP13	SP13		
	height h (mm)	width w (mm)	mass (kg)	mass (kg)
-170	71	102	0,405	0,645
-195	79	110	0,432	0,672
-225	88	119	0,465	0,705
-260	99	130	0,504	0,744
-300	112	143	0,548	0,788

EXAMPLE
AP13-300



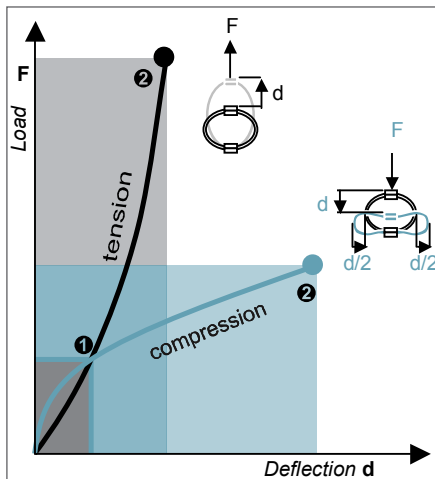
PREFIX:
machined 'Polycal'
mount
from the AP13 series

MODEL: -300
height: 112 mm
width: 143 mm
mass: 0,548 kg



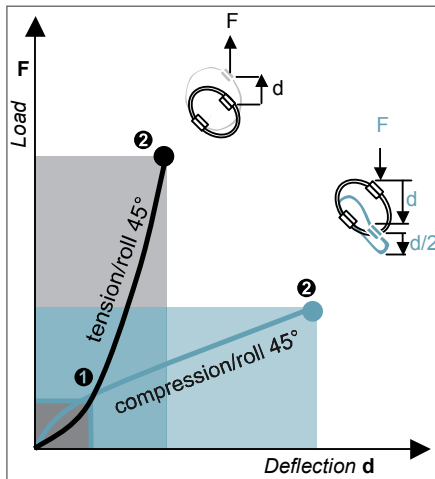
WIRE ROPE ISOLATORS: MACHINED LINE “POLYCAL”

PERFORMANCES
series AP13/SP13



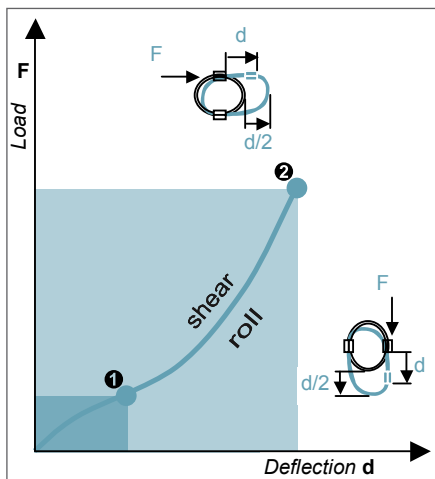
COMPRESSION AND TENSION

AP13/SP13 Series	Model	-170	-195	-225	-260	-300			
1. Max Static	F daN	36,0	30,9	26,5	22,4	18,8			
	d mm	6,3	7,6	9,1	11,0	13,1			
2. Max Shock	F daN	108	93	80	67	56			
	d mm	34	41	50	59	71			
3. Max Vibration	2a mm	3,8	4,6	5,5	6,6	7,9			
	f Hz	6	6	5	5	4			
1. Max Static	F daN	36,0	31,0	26,6	22,5	18,8			
	d mm	5,0	6,0	7,2	8,6	10,3			
2. Max Shock	F daN	241	208	178	150	126			
	d mm	17	21	25	30	36			
3. Max Vibration	2a mm	2,0	2,4	2,9	3,5	4,1			
	f Hz	8	7	7	6	6			



COMPRESSION/ROLL 45° - TENSION/ROLL 45°

AP13/SP13 Series	Model	-170	-195	-225	-260	-300			
1. Max Static	F daN	25,4	21,9	18,8	15,9	13,3			
	d mm	8,9	10,8	12,9	15,5	18,6			
2. Max Shock	F daN	76	66	56	48	40			
	d mm	48	59	70	84	101			
3. Max Vibration	2a mm	5,4	6,5	7,7	9,3	11,1			
	f Hz	5	5	4	4	3			
1. Max Static	F daN	23,1	19,9	17,1	14,4	12,1			
	d mm	6,0	7,3	8,8	10,5	12,6			
2. Max Shock	F daN	166	143	122	103	87			
	d mm	22	26	32	38	45			
3. Max Vibration	2a mm	2,4	2,9	3,5	4,2	5,0			
	f Hz	7	6	6	5	5			



SHEAR OR ROLL

AP13/SP13 Series	Model	-170	-195	-225	-260	-300			
1. Max Static	F daN	17,0	14,6	12,6	10,6	8,9			
	d mm	10,8	13,1	15,6	18,8	22,5			
2. Max Shock	F daN	108	93	80	67	56			
	d mm	36	43	52	62	75			
3. Max Vibration	2a mm	4,3	5,2	6,3	7,5	9,0			
	f Hz	5	5	4	4	3			

1. Max static load (F) with corresponding deflection (d)
2. Max shock load (F) with corresponding deflection (d)
3. Uncoupled resonant frequency (f) under max static loading 1. and max peak to peak sinusoidal vibration input (2a)

* IMPORTANT: Performance characteristics are given here for reference only. They can be increased under specific conditions. **Contact us.**

TYPICAL SHOCK/VIBRATION SPECIFICATIONS:

Ground Forces	GAM EG13A, SEFT 001, MIL-STD-810, VG 95332.
Air	AIR 7306, MIL-E-5400, MIL-C-172, MIL-STD-810.
Marine	GAM EG13C, IT25-21/96-31/15-86, MIL-S-167, MIL-S-901, STANAG 042, BV 043.73, BV 044.
Others	GAM EMB1, GAM EMBT4, DEF STAN 07-55, IEC 571, FINABEL 2C.