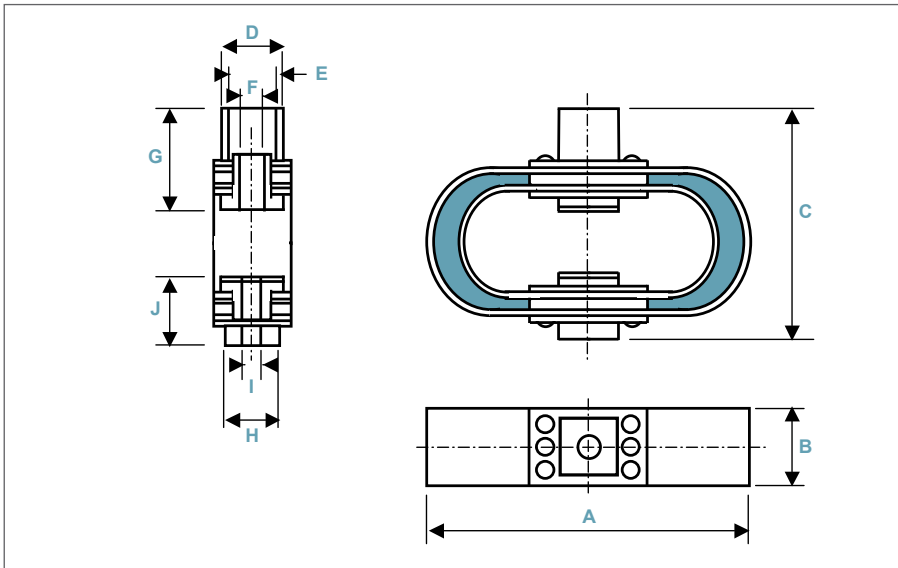


LEAF SPRING ELASTOMER MOUNTS: **LSY**

DEFINITION
series LSY



- Multidirectional anti-vibration/ shock mounts.
- Structure-born noise isolation.
- Displacement under shock up to 60mm along vertical direction and 40mm along radial.
- Transmissibility : $2 < Q < 6$.
- Transmitted acceleration limited to 5g along longitudinal direction and to 15g along vertical and transversal.
- Temperature range: $-20^{\circ}\text{C} +40^{\circ}\text{C}$.

Dimensions are in mm. For reference only.

SERIE
Materials and finishes (meets RoHS requirements)
LSY
Leaf and washer: stainless steel
Compound: epoxy resin
Bush: nylon and elastomer
Coating : Neoprene Paint

LOADS & DIMENSIONS														
type	static load (kg)			A	B	C	D	E	F	G	H	I	J	mass (kg)
	min	nom	max											
-10	9	10	18	203	51	134	40	29	M6	39	32	9(M8)	22	0,68
-20	18	20	35	203	51	134	40	29	M6	42	32	9(M8)	23	0,80
-45	35	45	55	216	51	166	50	36	M10	56	32	13(M12)	23,5	1,02
-70	55	70	90	216	51	166	50	36	M10	57	32	13(M12)	25	1,13
-110	90	110	135	216	51	166	50	36	M10	58	32	3(M12)	26	1,25
-180	135	180	250	297	102	229	101	63	M16	77	64	21(M20)	39	5,90
-320	250	320	380	297	102	229	101	63	M16	79	64	21(M20)	41	6,57
-450	380	450	550	297	102	229	101	63	M16	80	64	21(M20)	43	7,25

EXAMPLE
LSY-45



PREFIX:
'leaf spring' mount
from the
LSY series

MODEL: -45
nominal static load: 45kg
height: 166mm
length: 216mm
width: 51mm
mass: 1,02kg

