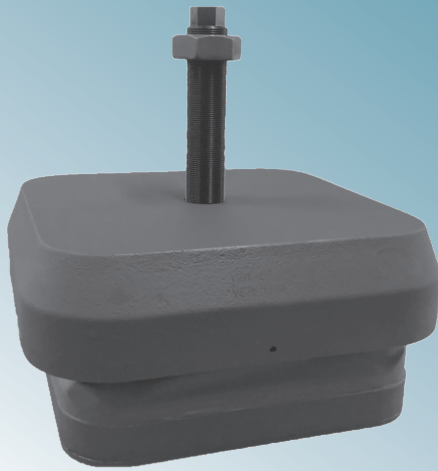
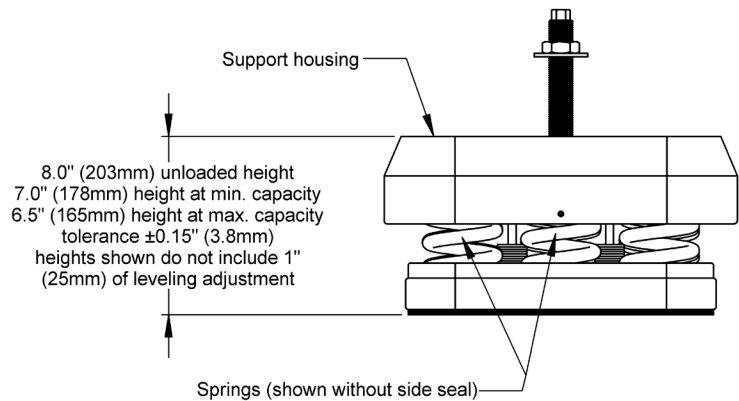
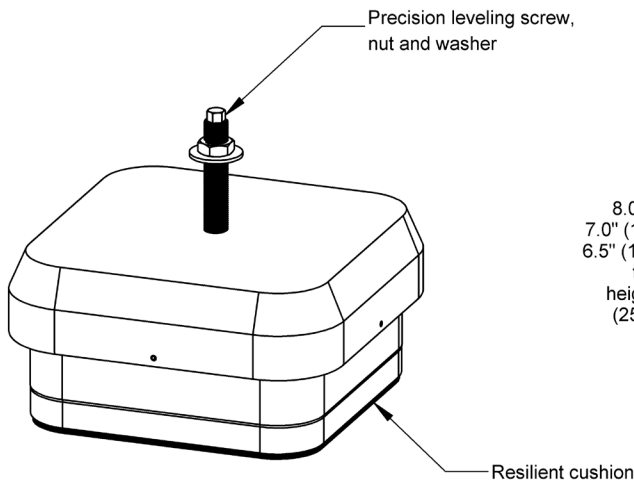
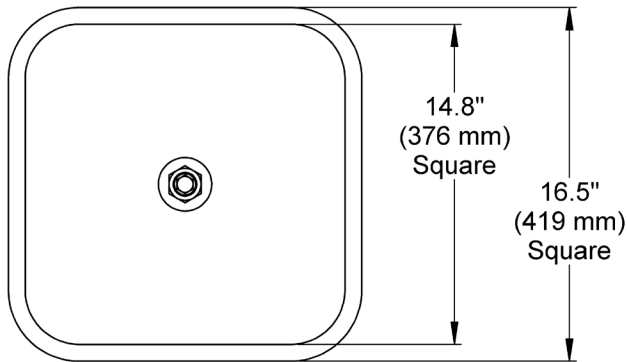


MODEL: VSML1608 Lo/Tuned™ Spring Mount



- 2.5-7.0 Hz natural frequency range
- Integral Leveling
- Material damping
- Load Ranges up to 17,520 lbs. (78 kN)
- Effectively isolates inertial and impact forces up to 99%
- Heavy-duty, low stress design.

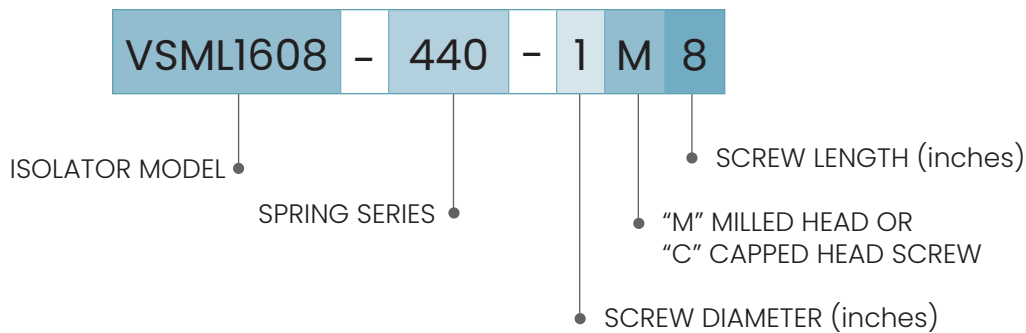
CUSTOM DESIGNS & SIZES ARE AVAILABLE



VSML1608 Isolator Specifications				
Model Number	Maximum Static Load		Isolator Weight	
	lbs.	kN	Lbs.	Kg.
VSML1608-440	17,520	78	184	84
VSML1608-260	16,140	72	184	84
VSML1608-600	15,210	68	174	79
VSML1608-420	13,830	62	174	79
VSML1608-240	12,450	55	174	79
VSML1608-060	11,070	49	174	79
VSML1608-220	8,760	39	163	74
VSML1608-040	7,380	33	164	75

Leveling Screw	Foot Thick-ness Up To:	Weight (lbs.)
1M4	0.48	1.2
1M5	1.48	1.3
1M6	2.48	1.5
1M8	4.48	1.9
1M10	6.48	2.3
1M12	8.48	3.0
1M14	10.48	3.5
1.25M6	2.31	2.5
1.25M8	4.31	3.1
1.25M10	6.31	3.7
1.25M12	8.31	4.3
1.25M16	12.31	6.1

Other Stock & Custom Lengths Available



TYPICAL APPLICATIONS

- High-Speed Punch Presses
- Turret Punch Presses
- Gear Hobbers & Shapers
- EDM Machines
- CMM Machines
- Furnaces
- Precision Hones
- Test Stands

NOTE: Isolator data subject to change without notice.

09/18/2019